

## Quick Start Guide for RFID Desktop Reader EVO HF 2.0

(R-DT-EVO-HF2)

### Function Description

This RFID device can be either operated in full read/write mode or in automatic read mode with keyboard emulation. The keyboard emulation works as compatible HID device, so that it will operate with most common operating systems. To operate the device, you have to download the SDK on our Website, you can find the links on the rear side!

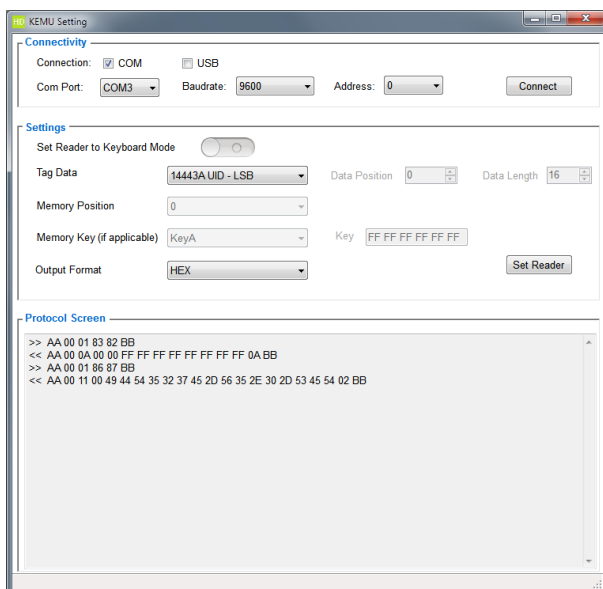
**When in keyboard emulation mode, it is not possible to do normal read/write operations with "RFID Reader.exe".**

### USB Driver Installation

If the device is connected to a PC for the first time, it can take some time for automatic installation of the Silicon Labs 210x Series VCP driver. If this is the case, please wait until this is fully done.

Normally the USB drivers are automatically installed with Windows operating systems. In rare cases it is possible, that automatic installation fails. Then perform a manual installation. You can download the latest drivers here: <http://www.silabs.com/products/mcu/pages/usbtouartbridgevcpdrivers.aspx>

### Switching between read/write Mode and Keyboard Emulation Mode (HID\*)



You can switch between the 2 modes with the "Kemu Setting" Software.

With this software you can configure the working mode of the reader and the output. Important: In the software there's a slide switch, with which you can switch between the working modes, but it doesn't update in real time, so it doesn't show you the working mode which the reader is operating at the time!

For more information, please refer to our SDK. The link to the SDK you find on the rear side or on our website : <https://www.idtronic-rfid.com>

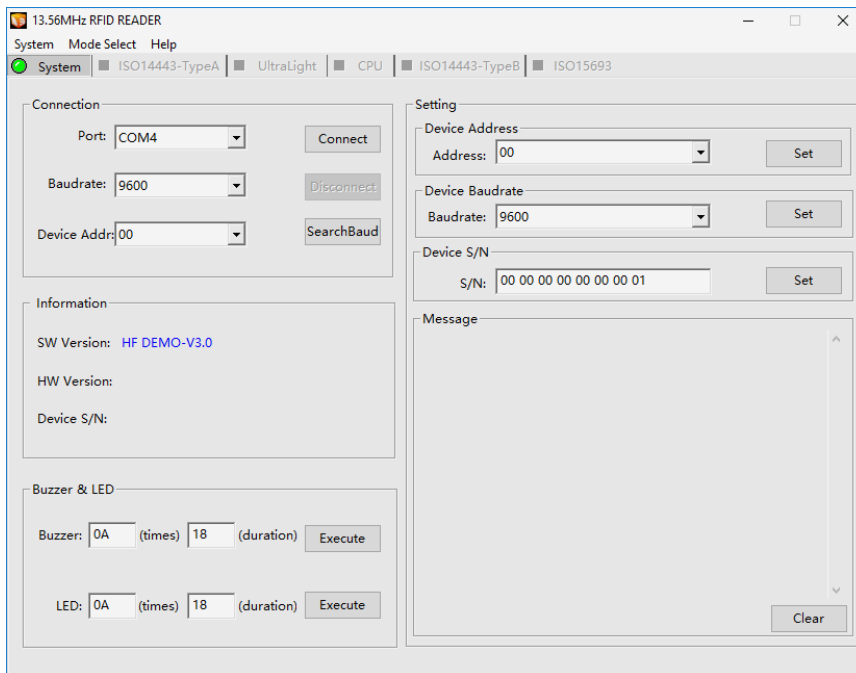
\* Human Interface Device, keyboard, mouse, graphics tablet, etc.

## Connecting to the read/write Software RFIDReader.exe

When you installed the driver and be sure that the reader is in read/write mode you can connect with the “RFIDReader.exe” software.

First connect the reader, then open the software, the right comport should be automatically selected by the software. Then click on “connect” to connect with the reader. For more information about this software, please refer to our SDK.

The link to the SDK you find on the on the bottom or on our website : <https://www.idtronic-rfid.com>



## Download SDK and get support



<https://tinyurl.com/y3jzov64>



[support@idtronic.zendesk.com](mailto:support@idtronic.zendesk.com)